

# HYDRAULIC VALVES & PUMPS

+918920689377



# MOBILIFT

A PRODUCT OF MULTITECH INDIA

## HYDRAULIC COMPONENTS & CONTROL SYSTEMS



[www.multitechindia.co.in](http://www.multitechindia.co.in)

## MB-LFA

2-WAY CONTROL COVER FOR DIRECTIONAL CONTROL FUNCTION, TYPE LFA



### FUNCTIONS:

- SIZE-16,25,32,40,50,63,80,100
- CARTRIDGE VALVES TYPE LC..
- CONTROL COVERS TYPE LFA..
- MAX. PRESSURE UPTO 400 BAR
- MAX FLOW UPTO 7000L/MIN

## MB-SV-SL

HYDRAULICALLY PILOT OPERATED CHECK VALVE, TYPE -SV/SL, SERIES 40



### NOTE :

THE SV AND SL VALVES ARE HYDRAULIC PILOT OPERATED CHECK VALVES OF POPPET TYPE DESIGN WHICH MAY BE OPENED TO PERMIT FLOW IN THE REVERSE DIRECTION.

THESE VALVES ARE USED FOR THE ISOLATION OF OPERATING CIRCUITS WHICH ARE UNDER PRESSURE, I.E. AS A SAFE GUARD AGAINST THE LOWERING OF A LOAD WHEN A LINE BREAK OCCURS OR AGAINST CREEPING MOVEMENTS OF HYDRAULICALLY LOCKED ACTUATORS.

## MB-LC

2-WAY CARTRIDGE VALVE FOR DIRECTIONAL CONTROL FUNCTION LC



### NOTE :

THE INSTALLATION KIT WITH A AND B CONNECTIONS IS INSTALLED INTO THE MANIFOLD IN A RECEIVING HOLE CLOSED WITH A CONTROL COVER. IN MOST CASES, THE CONTROL COVER IS ALSO THE CONNECTION FROM THE CONTROL SIDE OF THE INSTALLATION KIT TO THE PILOT CONTROL VALVE.

## MB-HPLK

PILOT OPERATED CHECK VALVE



### FUNCTIONS:

- FLOW IS ALLOWED TO PASS FROM V1 TO C1 WHEN PRESSURE AT V1 RISE ABOVE THE SPRING BIAS PRESSURE AND THE POPPET IS PUSHED FROM ITS SEAT .
- THE VALVE IS NORMALLY CLOSED ( CHECKED) FROM C1 TO V1; WHEN SUFFICIENT PILOT PRESSURE IS PRESENT AT X PORT, THE PILOT PISTON ACTS TO PUSH THE POPPET FROM ITS SEAT AND FLOW IS ALLOWED FROM C1 TO V1.
- PRECISION MACHINING AND HARDENING PROCESSES ALLOW VIRTUALLY LEAK-FREE PERFORMANCE IN THE CHECKED CONDITIO



**MOBILIFT**

# HYDRAULIC COMPONENTS & CONTROL SYSTEMS



## CONTENTS

HYDRAULIC PUMP & MOTORS PISTON MOTORS

ORBITAL MOTORS

GEAR PUMPS

INTERNAL GEAR PUMPS

VANE PUMPS

HYDRAULICS FOR MACHINE TOOLS

DIRECTIONAL VALVES

NEW SERIES PROPORTIONAL VALVES AIR COOLERS

FLOW CONTROL

ACCESSORIES

ELECTRONIC COMPONENTS

SPARES

[www.multitechindia.co.in](http://www.multitechindia.co.in)



# HYDRAULIC

## PUMPS & MOTORS

### MB-A2F

Fixed-displacement pump/motor



SIZE: 10,12,23,28,45,55,63,80  
107,125,160,200,250,355,500

### MB-A2FO

Fixed-displacement bent axis piston pump



SIZE : 10,12,16,28,32,45,56,  
63,80,90,107,125,160,180,200

#### NOTE :

**A2F** IS AN AXIAL PISTON OF BENT AXIS DESIGN, SUITABLE FOR USE IN BOTH OPEN AND CLOSED CIRCUIT HYDROSTATIC DRIVES, OUTPUT FLOW IS PROPORTIONAL TO THE FLOW OF FLUID THROUGH THE PUMP. OUTPUT SPEED IS PROPORTIONAL TO THE FLOW OF FLUID THROUGH THE MOTOR AND INVERSELY PROPORTIONAL TO MOTOR DISPLACEMENT. OUTPUT TORQUE INCREASE WITH THE PRESSURE DROP ACROSS THE MOTOR BETWEEN THE HIGH AND LOW PRESSURE SIDES.

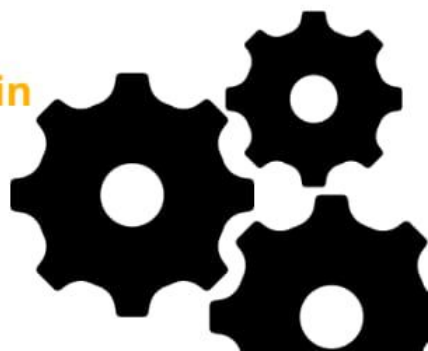
#### NOTE :

**axial** piston pump , bent axi type , fixed displacement suitable for open circuits

#### Features :

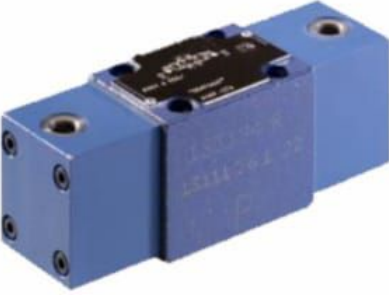
AXIAL PISTON FIXED PUMP A2FO DATA SHEET SERIES 6 SIZE 5 10 TO 200 250 TO 1000 OPEN CIRCUIT NOMINAL PRESSURE/MAXIMUM PRESSURE 315/350 BAR 400/450 BAR 350/400 BAR ORDERING CODE FOR STANDARD PROGRAM 2 FEATURES - FIXED PUMP WITH AXIAL TAPERED PISTON ROTARY GROUP OF BENT-AXIS DESIGN, FOR HYDROSTATIC DRIVES IN AN OPEN CIRCUIT - FOR USE IN MOBILE AND STATIONARY APPLICATIONS - THE FLOW IS PROPORTIONAL TO THE DRIVE SPEED AND DISPLACEMENT - THE DRIVE SHAFT BEARINGS ARE DESIGNED FOR THE BEARING SERVICE LIFE REQUIREMENTS USUALLY ENCOUNTERED IN THESE AREAS - HIGH POWER DENSITY - SMALL DIMENSIONS - HIGH TOTAL EFFICIENCY - ECONOMICAL DESIGN - ONE-PIECE TAPERED PISTON WITH PISTON RINGS FOR SEALING GENERAL INSTRUCTIONS

[www.multitechindia.co.in](http://www.multitechindia.co.in)



## MB-4-WH

DIRECTIONAL VALVE WITH FLUIDIC OPERATION,  
TYPE 4-WH



### NOTE :

4WH 6 JB 6X DIRECT OPERATED DIRECTIONAL CONTROL VALVE IS A PREMIUM QUALITY PRODUCT FROM BOSCH REXROTH. MOGLIX IS A WELL-KNOWN ECOMMERCE PLATFORM FOR QUALITATIVE RANGE OF DIRECTIONAL CONTROL VALVES. ALL BOSCH REXROTH 4WH 6 JB 6X DIRECT OPERATED DIRECTIONAL CONTROL VALVE ARE MANUFACTURED BY USING QUALITY ASSURED MATERIAL AND ADVANCED TECHNIQUES, WHICH MAKE THEM UP TO THE STANDARD IN THIS HIGHLY CHALLENGING FIELD. THE MATERIALS UTILIZED TO MANUFACTURE BOSCH REXROTH 4WH 6 JB 6X DIRECT OPERATED DIRECTIONAL CONTROL VALVE, ARE SOURCED FROM THE MOST RELIABLE AND OFFICIAL VENDORS, CHOSEN AFTER PERFORMING DETAILED MARKET SURVEYS. BOSCH REXROTH PRODUCTS ARE WIDELY ACKNOWLEDGED IN THE MARKET FOR THEIR HIGH QUALITY.

## MB-WMM10....30/

DIRECTIONAL CONTROL VALVE WITH HAND LEVER,  
TYPE 4-WMM,SERIES 30



### NOTE :

E MANUALLY ACTUATED DIRECTIONAL SPOOL VALVES. THEY CONTROL THE START, STOP AND DIRECTION OF A FLOW. THE DIRECTIONAL VALVES CONSIST OF VALVE HOUSING (1), HANDLE (2), CONTROL SPOOL (3), AND ONE OR TWO RETURN SPRINGS (4). WHEN DE-ENERGIZED, THE CONTROL SPOOL (3) IS HELD IN THE CENTRAL POSITION OR IN THE INITIAL POSITION BY THE RETURN SPRINGS (4).THE CONTROL SPOOL (3) IS MOVED TO THE DESIRED SPOOL POSITION BY MEANS OF THE TYPES OF ACTUATION.

## MB-M-SEW6/10

POPPER DIRECTIONAL VALVES  
SOLENOID ACTUATED  
TYPE-M-SEW6/10



### NOTE :

DIRECT OPERATED DIRECTIONAL POPPET VALVE, SOLENOID ACTUATED CLOSED PORT IS LEAK FREE SWITCHING IS ENSURED EVEN AFTER LONG PERIODS OF BEING UNDER PRESSURE AIR GAP DC SOLENOIDS WITH REMOVABLE COIL) IT IS NOT NECESSARY TO OPEN THE PRESSURE TIGHT CHAMBER WHEN CHARGING THE COIL) SOLENOID COIL CAN BE ROTATED BY 90DEGREE WITH PROTECTED HAND OVERRIDE, OPTIONAL INDIVIDUAL ELECTRICAL CONNECTION MOUNTING TYPE SUB PLATE MOUNTING



**MOBILIFT**



## MB-A6V

Variable displacement motor A6V



SIZE : 28,55,80,107,160,225,500

### NOTE :

A6V series The drives are optimized for a supply voltage of 24 or 48V DC and achieve a rated power output of 200 or 266W. With their compact dimensions, the A6V motors offer high power density coupled with very good energy efficiency. They are also characterized by their long life time and their overload capacity, which is particularly important in the case of short-term power peaks. The 23-bit absolute encoder and the pulse train with up to 500kpps ensure precise and dynamic positioning.

## MB-A8V

VARIABLE DOUBLE PUMP A8V



SIZE : 28,55,58,80,107,125,160

### NOTE :

Two variable pumps in a common housing, the splitter box, an SAE flange for direct mounting on to the prime mover and the control device usually summation HP control. Flow is proportional to speed by change the swivel angle.

## MB-A4VTG

VIARIABLE DISPLACEMENT AXIAL PISTON PUMP



SIZE : 71 , 90

### NOTE :

Axial piston pump, swash plate design for hydro static close loop circuit system used in varied medium duty application in industrial & mobile machines.

## MB-"A"SEARIES

VIARIABLE DISPLACEMENT PISTON PUMP



### NOTE :

High volumetric efficiency upto 98% and overall efficiency is more than 90%. Low noise level.

### FEATURES :

The "A" Series variable displacement pump accomplish high energy saving characteristics  
Widely used in plastic injection machinery Machine tools and medium duty industrial application covering a broad segment of the industry requirement.  
Two kinds of control type, which are pressure compensator type("01"type) and proportional electro-hydraulic load sensing

## MB-4WRPEH6/10

SERVO SOLENOID PROPORTIONAL VALVE

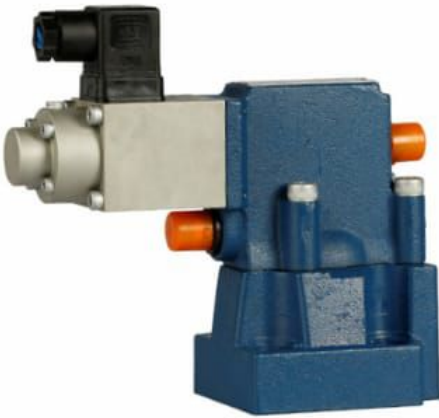


### NOTE :

- VALVE FOR ELECTRICAL REMOTE CONTROL OF PRESSURE.
- LIMITING IN A SYSTEM PRESSURE.
- PROPORTIONAL SOLENOID ACTUATION WITH INDUCTIVE POSITION TRANSDUCER.
- BOTH VALVE AND ELECTRONIC CONTROL FROM ONE SUPPLIER MOUNTING TYPE: SUB-PLATE MOUNTING

## MB-DBE/DBEM

PROPORTIONAL PRESSURE RELIEF VALVE TYPE DBE/DBEM



### NOTE :

- TYPE HD-DBE/DBEM
- MAX PRESSURE UPTO 315 BAR
- MAX FLOW UPTIO 600L/MIN
- DELAY COMPONENTS 1.5 WITH BUFFETING 4.5 WITHOUT BUFFETING
- REPEATABILITY PRECISION  $\pm 2$
- ELECTRONIC CONTROL VT-2000S 40

## MB-DBE/DREM



### NOTE :

- TYPE HD-DRE/DREM
- MAX PRESSURE UPTO 315 BAR
- MAX FLOW 300L/MIN
- DELAY COMPONENTS 1.5 WITH BUFFETING P MAX, 4.5 WITHOUT BUFFETING P.MAX
- REPEATABILITY PRECISION  $\pm 2$
- ELECTRONIC CONTROL VT-2000S 40

## MB-ZDR

DIRECT OPERATED .PRESSURE REDUCING VALVETYPE- ZDR



### NOTE :

PRESSURE REDUCING VALVE SERIES ZDR (DENISON)

PILOT OPERATED PRESSURE REDUCING VALVES SERIES ZDR ARE DESIGNED FOR MAXIMUM FLOW RATES.

THE REDUCING FUNCTION CAN BE LOCATED IN THE PORTS P, A OR B. THE SIZES NG06 AND NG10 ARE EQUIPPED WITH AN INTEGRAL RETURN FLOW CHECK VALVE (REDUCING FUNCTION IN A OR B).

## MB-3DREP6

PROPORTIONAL PRESSURE REDUCING VALVE OF 3-WAYDESIGN, TYPE 3DREP6



### NOTE :

- TYPE HD-3DREP6
- MAX PRESSURE UPTO 100 BAR
- MAX FLOW UPTO 15L/MIN
- DELAY COMPONENTS <3
- REPEATABILITY PRECISION <1
- ELECTRONIC CONTROL WITH 1 RAMP TIMES VT-3000S30
- ELECTRONIC CONTROL WITH 5 RAMP TIMES VT-3006S30

## MB-4WRE

PROPORTIONAL DIRECTIONAL VALVE TYPE 4WRE



### NOTE :

DIRECT ACTUATED PROPORTIONAL VALVE FOR CONTROLLING THE DIRECTION AND VOLUME FLOW OF A HYDRAULIC FLUID ELECTRICAL FEEDBACK WET PIN DC PROPORTIONAL SOLENOIDS SPRING CENTERED CONTROL SPOOL BOTH VALVE AND ELECTRONIC CONTROL FROM ONE SUPPLIER MOUNTING TYPE: SUB-PLATE.

## MB-2FRE

PROPORTIONAL FLOW CONTROL VALVE 2-WAY VERSION, TYPE 2FRE



### NOTE :

ACCORDING TO ELECTRICAL COMMAND VALUE CONTROLLING THE VOLUME FLOW OF A HYDRAULIC FLUID WITH A PRESSURE COMPENSATOR FOR THE PRESSURE COMPENSATED CONTROL OF A FLOW ACTUATION VIA A PROPORTIONAL SOLENOID WITH ELECTRICAL POSITION FEEDBACK OF THE CONTROL ORIFICE BOTH VALVE AND ELECTRONIC CONTROL FROM ONE SUPPLIER.

## MB-RVP

CHECK VALVE TYPE -RVP



### NOTE :

CHECK VALVE TYPE RVP IS USED TO ALLOW FLUID FLOWING IN ONE DIRECTION AND LEAKAGE-FREE CLOSURE IN OPPOSITE DIRECTION. WHEN FLUID FLOWS VIA PORT P1, FLUID PUSH POPPET (2) TO MOVE RIGHT WAY OVERCOMING THE SPRING (3), THEN CONNECTS THE CHAMBER P1 AND P2. WHEN FLUID FLOWS P2 TO P1, POPPET (2) MOVES LEFT WAY AND THEN THE CHECK VALVE CLOSES.

## MB-Z1S

CHECK VALVE , TYPE-Z1S



### NOTE :

PREFERABLY CLOSING A FLOW LEAK FREE IN ONE DIRECTION AND TO PERMIT FREE FLOW IN THE OPPOSITE DIRECTION. SANDWICH PLATE VALVE FOR USE IN VERTICAL STACKING ASSEMBLIES.

### FEATURES:

- SANDWICH PLATE VALVE FOR USE IN VERTICAL STACKING ASSEMBLIES
- 8 DIFFERENT ISOLATING FUNCTIONS

## MB-DB....50/....

PILOT OPERATED PRESSURE RELIEF VALVE,  
TYPE DB..../ ...



### FEATURES:

- PILOT OPERATED PRESSURE REDUCING VALVE
- 4 PRESSURE ADJUSTMENT ELEMENTS, OPTIONAL
- 4 PRESSURE RANGES (IN BAR): 50, 100, 200, 315
- CHECK VALVE OPTIONAL
- 2 MOUNTING TYPE: SUB-PLATE MOUNTING  
THREADED CONNECTION

## MB-DB.....K

PILOT OPERATED RELIEF VALVE,  
CARTRIDGE CONNECTION TYPE DB...K



### NOTE :

- TYPE HD-DB...K
- MAX. PRESSURE UPTO 315 BAR
- MAX. FLOW 250L/MIN
- 4 PRESSURE RANGES (IN BAR): 50, 100, 200, 315.
- 4 PRESSURE ADJUSTMENT ELEMENTS, OPTIONAL.
- MOUNTING TYPE: CARTRIDGE CONNECTION



## MB-A4VSO

VARIABLE DISPLACEMENT PUMP A4VSO



SIZE : 40 , 71 , 125 , 180,  
250 , 300 , 355

### NOTE :

Pump A4VSO of swash plate design is design for hydro-static transmission in an open circuit. Flow is proportional to input speed & displacement, and is infinitely variable by adjustment of the swash plate.

## MB-A10VSO/10....140

FIXED-DISPLACEMENT AXIS PISTON PUMP



size : 10,18,28,45,71,100,140

### NOTE :

A10VSO is a variable pump with axial piston transmission in swash plate design for hydrostatic drives in the open circuit. The flow is proportional to the drive speed and the displacement. By adjusting the swash plate, the flow can be steplessly changed.

## MB-A10VSODFE/DFEE

CONTROL TYPE SYDFE/SYDFEE



SIZE : 28,45,71,100,140

### NOTE :

The A10VSO piston pump works by utilizing the volume change produced by reciprocating the piston in the plunger bore parallel to the drive shaft. Because the plunger and the plunger hole are all circular parts, high accuracy can be achieved during processing. Therefore, the volumetric efficiency is high, the operation is smooth, the flow uniformity is good, the noise is low, the working pressure is high, but the hydraulic oil is contaminated. More sensitive, more complex structure, higher cost. Generally used in industrial applications, Rexroth A10VSO pump has a low-noise design and features a Universal through-drive with coverplate.



## MB-DBT/DBWT

PRESSURE REMOTE RELIEF VALVE ,  
TYPE DBT/DBWT



### NOTE :

- TYPE HD-DBT/DBWT
- MAX PRESSURE UPTO 315 BAR
- MAX FLOW UPTO 3L/MIN
- REMOTE CONTROL IN LONG DISTANCE.
- 3 PRESSURE ADJUSTMENT ELEMENTS, OPTIONAL.
- MOUNTING TYPE: SUB-PLATE MOUNTING.

## MB-DR

PILOT OPERATED PRESSURE REDUCING VALVE, TYPE DR (50 SERIES)



### NOTE :

- PILOT OPERATED PRESSURE REDUCING VALVE
- 4 PRESSURE ADJUSTMENT ELEMENTS, OPTIONAL
- 4 PRESSURE RANGES (IN BAR): 50, 100, 200, 315
- CHECK VALVE OPTIONAL
- 2 MOUNTING TYPE: SUB-PLATE MOUNTING  
THREADED CONNECTION

## MB-DZ

PILOT OPERATED PRESSURE SEQUENCE VALVE , TYPE D



### NOTE :

PRESSURE SEQUENCE VALVE  
TYPE: DZ10-1-5X/200YM/12  
SIZE 10 ... 32  
COMPONENT SERIES 5X  
MAXIMUM OPERATING PRESSURE 4550 PSI  
MAXIMUM FLOW 159 GPM  
SUITABLE FOR USE AS PRELOAD, SEQUENCING AND  
CHANGEOVER VALVE  
FOR SUBPLATE MOUNTING  
AS CARTRIDGE VALVE  
4 PRESSURE RATINGS  
4 ADJUSTMENT TYPES:  
• ROTARY KNOB  
• SLEEVE WITH HEXAGON AND PROTECTIVE CAP  
• LOCKABLE ROTARY KNOB WITH SCALE  
• ROTARY KNOB WITH SCALE  
CHECK VALVE, OPTIONAL

## MB-ZDB/Z2DB

PILOTOPERATED PRESSURE RELIEF  
VALVE TYPE - ZDB/2DB



### NOTE :

- SANDWICH PLATE VALVE
- WITH ONE OR TWO PRESSURE RELIEF CARTRIDGES
- 4 PRESSURE RANGES: 50, 100, 200, 315
- 3 PRESSURE ADJUSTMENT ELEMENTS, OPTIONAL
- 5 CIRCUIT OPTIONS (SIZE 6) OR 6 CIRCUIT OPTIONS (SIZE 10)

## MB-AF6E

PRESSURE GAUGE-ISOLATOR VALVE  
TYPE MB-AF6E



### NOTE :

- 3-WAY LONGITUDINAL VALVE
- PUSH BUTTON OPERATED
- MOUNTING TYPE: SUB-PLATE MOUNTING, THREADED CONNECTION

## MB-HED4/HED8

HYDRO-ELECTRIC PRESSURE SWITCH TYPE-MB-HED4/HED8



### NOTE :

- FOR CHANGING THE PRESSURE SIGNAL TO ELECTRICAL SIGNAL.
- 3 MAX. SETTING PRESSURES.
- 3 MOUNTING TYPE: SUB PLATE MOUNTING.
- THREADED CONNECTION.
- AS VERTICAL STACKING ELEMENT.

## MB-MS2A

MULTI-CIRCUIT GAUGE ISOLATOR,  
TYPE MS2A



### NOTE :

- VALVE HOUSING WITH THREADED CONNECTIONS
- 6 MEASURING POINTS
- WITH BUILT-IN PRESSURE GAUGE
- FLANGE MOUNTING

## MB-HED1

HYDRO-ELECTRIC PRESSURE SWITCH,  
TYPE MB-HED1



### NOTE :

- LIVE TERMINALS ARE COVERED BY INSULATION FOIL
- DRAIN PORT, OPTIONAL
- CHECK LAMP, OPTIONAL
- ELECTRICAL CONNECTION
- - CABLE GLAND
- - PLUG-IN CONNECTION

## MB-DBD

PRESSURE RELIEF VALVE, DIRECT OPERATED, TYPE DBD



### NOTE :

PRESSURE RELIEF VALVES ARE DESIGNED TO LIMIT MAXIMUM PRESSURE IN THE ENTIRE HYDRAULIC SYSTEM OR IN ITS PART. DEPENDING ON THE TYPE OF MOUNTING IN THE SYSTEM, DIRECT OPERATED PRESSURE RELIEF VALVES TYPE DBD... CAN BE SCREWED (CARTRIDGE VERSION), MOUNTED INTO THREADED CONNECTIONS (VERSION FOR THREADED CONNECTION) OR MOUNTED TO SUBPLATE (VERSION FOR SUBPLATE MOUNTING).

## MB-DR....DP

DIRECT OPERATED PRESSURE REDUCING VALVE  
TYPE DR....DP



### NOTE :

THE VALVE IS OPEN IN INITIAL POSITION. HYDRAULIC FLUID CAN FLOW FROM CHANNEL P TO CHANNEL A WITHOUT RESTRICTIONS. THE PRESSURE IN CHANNEL A IS SIMULTANEOUSLY APPLIED VIA THE CONTROL LINE (6) AT THE PISTON AREA OPPOSITE THE COMPRESSION SPRING (3). IF THE PRESSURE IN CHANNEL A EXCEEDS THE VALUE SET AT THE COMPRESSION SPRING (3), THE CONTROL SPOOL (2) MOVES INTO CONTROL POSITION AND KEEPS THE SET PRESSURE IN CHANNEL A AT A CONSTANT LEVEL.

## MB-DZ...DP

DIRECT OPERATED PRESSURE REDUCING VALVE  
TYPE DR....DP



### NOTE :

THE COMPRESSION SPRING (2) HOLDS THE CONTROL SPOOL (3) IN INITIAL POSITION, THE VALVE IS BLOCKED. THE PRESSURE IN CHANNEL A IS APPLIED VIA THE CONTROL LINE (4) AT THE SPOOL FACE OF THE CONTROL SPOOL (3) OPPOSITE THE COMPRESSION SPRING (2). IF THE PRESSURE IN CHANNEL A REACHES THE SET VALUE OF THE COMPRESSION SPRING (2), THE CONTROL SPOOL (3) IS MOVED TO THE RIGHT AND THE CONNECTION FROM A TO B IS OPENED. THE SYSTEM CONNECTED TO CHANNEL B IS CONNECTED WITHOUT A PRESSURE DROP IN CHANNEL A. THE CONTROL SIGNAL IS RECEIVED INTERNALLY VIA THE CONTROL LINE (4) FROM CHANNEL A OR EXTERNALLY VIA PORT X.

## MB-LC DB

2-WAY CARTRIDGE VALVE FOR RELIEF  
CONTROL FUNCTION LC....DB



### NOTE :

THE FACTORY IS COVERING APPROXIMATELY 70 THOUSAND SQUARE METERS AREA WITH AROUND 600 EQUIPMENTS, INCLUDING MANY KINDS OF HIGH SPEED LATHES, CNC, HIGH PRECISE GRINDING MACHINE, TESTING BENCHES AND TESTING MACHINES, WITH 400 EMPLOYEES AND MORE THAN 10% OF THEM ARE TECHNICIANS. WE HAVE GOT THE ISO9001: 2015 CERTIFICATE AND CE CERTIFICATE, WE MANUFACTURE ALL OF HYDRAULIC VALVES FITTINGS BY OURSELVES AND OWN IMPORT AND EXPORT LICENSE, THE ANNUAL PRODUCTION CAPACITY FOR HYDRAULIC VALVES IS MORE THAN 800, 000 PIECES. THE SELF-OWNED BRAND REKITH AND LANDER IS WITH HIGH QUALITY AND HIGH COST PERFORMANCES, WHICH CONSIDERABLY

## MB-Z2S

CHECK VALVE, HYDRAULICALLY PILOT OPERATED TYPE- Z2S



### NOTE :

THE ISOLATOR VALVE TYPE Z2S IS A RELEASABLE CHECK VALVE IN SANDWICH PLATE DESIGN. IT IS USED FOR THE LEAKAGE-FREE BLOCKING OF ONE OR TWO ACTUATOR PORTS, ALSO IN CASE OF LONGER STANDSTILL TIMES

## MB-DA/DAW

PILOT OPERATED SHUT-OFF VALVE , TYPE DA/DAW



### FEATURES:

- FOR SUBPLATE MOUNTING
  - 4 ADJUSTMENTS ELEMENTS
  - 1. ROTARY KNOB
  - 2. SLEEVE WITH INTERNAL HEXAGON AND PROTECTIVE CAP
  - 3. LOCKABLE ROTARY KNOB WITH SCALE
  - 4. ROTARY KNOB WITH SCALE
  - 4 PRESSURE RATING, OPTIONAL
  - SOLENOID ACTUATED UNLOADING VIA A BUILT ON DIRECTIONAL VALVE
- RELATED PRODU

## MB-DBW....50/....

PILOT OPERATED PRESSURE RELIEF VALVE , TYPE DBW....50/....



### FEATURES:

- TYPE HD-DBW....50/....
- MAX. PRESSURE UPTO 350 BAR
- MAX. FLOW UPTO 650L/MIN
- SOLENOID OPERATED UNLOADING VIA A BUILT ON DIRECTIONAL SPOOL VALVE.
- 5 PRESSURE RANGES (IN BAR) 50, 100, 200, 315, 350.
- 3 PRESSURE ADJUSTMENT ELEMENTS, OPTIONAL.
- 3 MOUNTING TYPES: SUB-PLATE MOUNTING.
- THREADED CONNECTION, MANIFOLD MOUNTING.

## MB-DB3U10-30...30/...

PILOT OPERATED PRESSURE RELIEF VALVE, WITH TWO OR THREE PRESSURE RATING TYPE - DBU10-30...30/...



### NOTE :

- SOLENOID OPERATED CONTROL VIA MOUNTED DIRECTIONAL VALVE.
- 2 PRESSURE RANGES (IN BAR) 100, 315BAR.
- 3 PRESSURE ADJUSTMENT ELEMENTS, OPTIONAL.
- 3 MOUNTING TYPE: SUB-PLATE MOUNTING.
- THREADED CONNECTION, MANIFOLD MOUNTING.

# DIRECTIONAL VALVES

## MB-4WE

directional control valve , evecctrically operated,type 4we

### NOTE :

C 4/2 directional spool valves in the series 4WE 10 EA are directional valves for oil- hydraulic systems, which serve to open and close flow paths. In the deenergised mode the control spool is held in the rest position by the return spring. The actuation of the control spool occurs via an oil- immersed solenoid. The solenoid pushes the control spool from its rest position to its final position. This opens the required flow paths according to the symbol. When the solenoid is deenergised, the control spool is pushed back to the rest position by the return spring. A manual override permits the valve to be switched without energizing the solenoid.



## MB-4WEH/WH

PILOT OPERATED DIRECTIONAL VALVE, TYPE WEH/WH

### NOTE :

VALVES OF TYPE WEH ARE DIRECTIONAL SPOOL VALVES WITH ELECTROHYDRAULIC ACTUATION. THEY CONTROL THE START, STOP AND DIRECTION OF A FLOW.

VALVES OF TYPE WH ARE DIRECTIONAL SPOOL VALVES WITH HYDRAULIC ACTUATION. THEY CONTROL THE START, STOP AND DIRECTION OF A FLOW.



## MB-WMU/R

ROLLER OPERATED DIRECTIONAL VALVE TYPE-WMU/R

### NOTE :

TYPE HD-WMUR  
MAX. PRESSURE UPTO 315 BAR  
MAX. FLOW 120L/MIN  
DIRECTED OPERATED DIRECTIONAL SPOOL VALVE WITH ADJUSTABLE ROLLER OPERATION ROLLER LEVER ASSEMBLY MAY BE STEPPED IN 90 DEGREE INCREMENTS.



## MB-4-WE4....20/

DIRECTIONAL CONTROL, ELECTRICALLY OPERATED TYPE4-WE....20/

### NOTE :

DIRECTIONAL VALVES TYPE 4WE ARE SOLENOID OPERATED DIRECTIONAL SPOOL VALVES. THEY CONTROL THE START, STOP, AND DIRECTION OF A FLOW. THESE DIRECTIONAL VALVES BASICALLY CONSIST OF HOUSING; ONE OR TWO SOLENOIDS; CONTROL SPOOL; AND NO, ONE, OR TWO RETURN SPRINGS. A FULL ARRAY OF SPOOLS ARE POSSIBLE WITH VARIATIONS IN VOLTAGE AND ELECTRICAL CONNECTION, ALL WITHIN THE PROGRAM.



## MB-4WRA

PROPORTIONAL DIRECTIONAL VALVE, DIRECT ACTUATED, WITHOUT ELECTRICAL FEEDBACK, TYPE 4WRE



### NOTE :

DIRECT ACTUATED PROPORTIONAL VALVE FOR CONTROLLING THE DIRECTION AND VOLUME FLOW OF THE HYDRAULIC FLUID. WET PIN DC PROPORTIONAL SOLENOIDS SPRING CENTERED CONTROL SPOOL BOTH VALVE AND ELECTRONIC CONTROL FROM ONE SUPPLIER. FOR SUB PLATE MOUNTING

## MB-4WRZ....7X

PROPORTIONAL DIRECTIONAL VALVE



### NOTE :

- PILOT OPERATED 2-STAGE PROPORTIONAL DIRECTIONAL VALVES WITH INTEGRATED ELECTRONICS (OBE)
- CONTROLS THE DIRECTION AND MAGNITUDE OF THE FLOW
- SPRING-CENTERED CONTROL SPOOL
- COMPONENT SERIES 7X
- OPERATION BY MEANS OF PROPORTIONAL SOLENOID WITH DETACHABLE COIL
- INTERNAL PILOT OIL SUPPLY AND PILOT OIL RETURN

## MB-4WR

PROPORTIONAL DIRECTIONAL VALVES PILOT OPERATED TYPE 4WRZ EXTERNAL PILOT OPERATED TYPE 4WRH



### NOTE :

1. COMPLETELY INTERCHANGEABLE WITH ORIGINAL
2. FOR DIFFERENT KINDS OF HYDRAULIC SYSTEMS
3. NOMINAL SIZE: 6 TO 52
4. PORTING PATTERN TO DIN 24340 FORM A
5. CONTROL OF THE DIRECTION AND MAGNITUDE OF A FLOW
6. PROPORTIONAL SOLENOID OPERATION
7. SPRING-CENTRED CONTROL SPOOL
8. DIFFERENT SPOOL OVERLAPS POSSIBLE

## MB-DBETR

PROPORTIONAL PRESSURE RELIEF VALVE, TYPE DBETR



### NOTE :

- VALVE FOR ELECTRICAL REMOTE CONTROL OF PRESSURE.
- LIMITING IN A SYSTEM PRESSURE.
- PROPORTIONAL SOLENOID ACTUATION WITH INDUCTIVE POSITION TRANSDUCER.
- BOTH VALVE AND ELECTRONIC CONTROL FROM ONE SUPPLIER
- MOUNTING TYPE: SUB-PLATE MOUNTING

## MB-2FRM6...31/

2-WAY FLOW CONTROL VALVE , TYPE ML-2FRM



### NOTE :

- AMBIENT TEMPERATURE RANGE: -20°C TO +50°C  
HYDRAULIC FLUID TEMPERATURE RANGE: -20°C TO +80°C
- MAXIMUM OPERATING PRESSURE: 315 BAR
- MINIMUM PRESSURE DIFFERENTIAL: 6 BAR TO 14 BAR
- PRESSURE STABILITY UP TO  $\Delta P = 315$  BAR:  $\pm 2\%$  (QV MAX)
- VISCOSITY RANGE : 10 MM<sup>2</sup>/S TO 800 MM<sup>2</sup>/S

## MB-DV/DRV

THROTTLE CHECK VALVE, TYPE MB-DV/DRV



### NOTE :

FOR SETTING AND SHUT-OFF FLOW OF FLUID THROTTLE VALVE TYPE DV AND THROTTLE CHECK VALVE TYPE DRV  
2 MOUNTING TYPE SUB-PLATE MOUNTING THREADED CONNECTION.

#### FEATURES:

- THREADED CONNECTION
- SUBPLATE MOUNTING

## MB-MG/MK

THROTTLE CHECK VALVE, TYPE MB-MG/MK



### NOTE :

SUITABLE FOR DIRECT IN LINE MOUNTING PRESSURE AND VISCOSITY DEPENDENT THROTTLE VALVE TYPE MG AND THROTTLE CHECK VALVE TYPE MK  
MOUNTING TYPE: THREADED CONNECTION.

#### FEATURES:

- SUITABLE FOR DIRECT IN LINE MOUNTING
- PRESSURE AND VISCOSITY DEPENDENT

## MB-FD



### NOTE :

PILOT OPERATED CHECK VALVE LEAK-FREE 2 MOUNTING TYPE : SUB PLATE MOUNTING, THREADED CONNECTION BY PASS VALVE, FREE FLOW IN OPPOSITE DIRECTION OPTIONAL BUILT-ON SECONDARY PRESSURE RELIEF VALVE (ONLY FOR VALVE WITH FLANGE CONNECTION) 3 MOUNTING TYPE MANIFOLD MOUNTING (CARTRIDGE VALVE), SUB PLATE MOUNTING, SAE FLANGE CONNECTIONS.

#### FEATURES:

- PORTING PATTERN TO DIN 24 340 FROM D, ISO 5781 AND CETOP-RP 121 H.
- PILOT OPERATED CHECK VALVE, LEAK FREE,- THE CHECK Q METER CONTROLS THE RETURNING FLOW Q42 IN RELATION TO THE FLOW BEING DIRECTED INTO THE OPPOSITE SITE OF THE ACTUATOR QV1 WITH CYLINDERS THE AREA RATIO HAS TO TAKEN INTO ACCOUNT.
- BY PASS VALVE, FREE FLOW IN OPPOSITE DIRECTION
- OPTIONAL BUILT IN SECONDARY PRESSURE RELIEF VALVE .

## MB-(Z)DBE

PROPORTIONAL PRESSURE RELIEF VALVE



### NOTE :

- PILOT-OPERATED PROPORTIONAL VALVE FOR SYSTEM PRESSURE LIMITATION
- PROPORTIONAL SOLENOID OPERATION
- PROPORTIONAL SOLENOID WITH ROTATABLE AND DETACHABLE COIL
- FOR SUBPLATE MOUNTING OR SANDWICH PLATE DESIGN: PORTING PATTERN ACCORDING TO ISO 4401-03-02-05 AND DIN24340
- VALVE AND CONTROL ELECTRONICS FROM A SINGLE SOURCE
- EXTERNAL CONTROL ELECTRONICS FOR TYPES DBE AND ZDBE
- LINEAR PRESSURE/COMMAND VALUE CHARACTERISTIC CURVE

## MB-4WRA(E)6....2X

NEW SERIES PROPORTIONAL DIRECTIONAL VALVE



### NOTE :

- FOR SUB-PLATE MOUNTING
- DIRECT ACTUATED PROPORTIONAL VALVE FOR CONTROLLING THE DIRECTION AND VOLUME OF A FLOW
- SPRING CENTERED CONTROL SPOOL
- INTEGRATED CONTROL ELECTRONICS, INTERFACE A1 OR F1 FOR TYPE 4WRAE
- ACTUATION BY MEANS OF PROPORTIONAL SOLENOIDS WITH CENTRAL THREAD AND REMOVABLE COIL
- CONTROL ELECTRONICS FOR TYPE 4WRA

## MB-4WRZE10

PROPORTIONAL DIRECTIONAL VALVE



### NOTE :

4WRZ(E) IS A PILOT OPERATED PROPORTIONAL DIRECTIONAL VALVE WITH SUBPLATE MOUNTING OPERATED BY PROPORTIONAL SOLENOIDS. THE SOLENOIDS ARE EITHER CONTROLLED VIA EXTERNAL OR INTEGRATED ELECTRONICS (OBE).

AVAILABLE IN SIZES: 10 | 16 | 25 | 32 | 52 | THE VALVE HAS A MAXIMUM OPERATING PRESSURE OF 350 BAR AND A MAXIMUM FLOW OF 2800 LITRES PER MINUTE.

## MB-4WRKE10,25,32,35

PROPORTIONAL DIRECTIONAL VALVE, PILOT OPERATED WITH ELECTRICAL POSITION FEEDBACK TYPE



### NOTE :

- PILOT OPERATED 2-STAGE PROPORTIONAL DIRECTIONAL VALVE
- FOR SUBPLATE MOUNTING
- VALVE FOR THE CONTROL OF THE SIZE AND DIRECTION OF THE FLOW
- ACTUATION VIA PROPORTIONAL SOLENOIDS
- SPRING CENTERED MAIN SPOOL
- ELECTRICAL POSITION FEEDBACK
- SINGLE STAGE PROPORTIONAL DIRECTIONAL VALVE PILOT CONTROL
- MAIN STAGE WITH CLOSED LOOP POSITION CONTROL